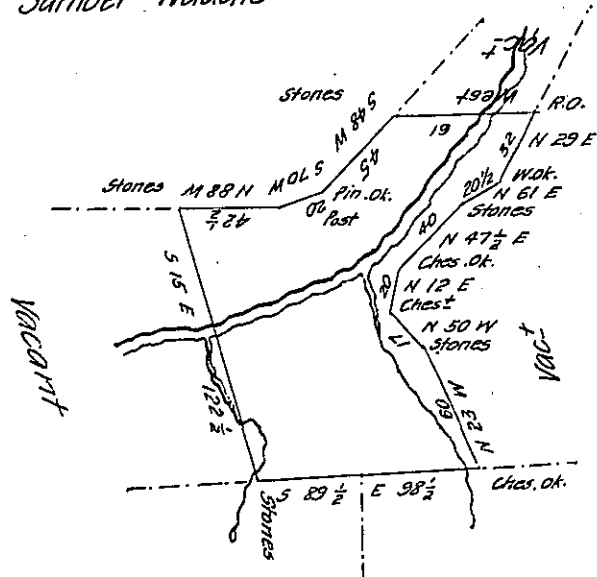


FORM NO 1.

Samuel Waddle



169.6 | 1330.0411 | 18 Ac. 16 Per.

Robt Cronkleton

C. P. Regurt

Surveyed July 18th 1836

To Henry Palmer the above described tract of land containing seventy eight acres and seventy six perches and allowance of six per cent adjoining lands of Samuel Waddle Robert Cronkleton Claudius Paul Regurt and others including an improvement Situated on the waters of Black Lick Creek in Wheatfield township Indiana County By Warrant bearing date May 25th 1836

Wm. Evans. D. S.

To John Taylor

Surveyor General.

IN TESTIMONY that the above is a copy of the original remaining on file in the Department of Internal Affairs of Pennsylvania, made conformably to an Act of Assembly approved the 16th day of February, 1833, I have hereunto set my Hand and caused the Seal of said Department to be affixed at Harrisburg, this twenty second day of January 1908

Henry Howell
Secretary of Internal Affairs.